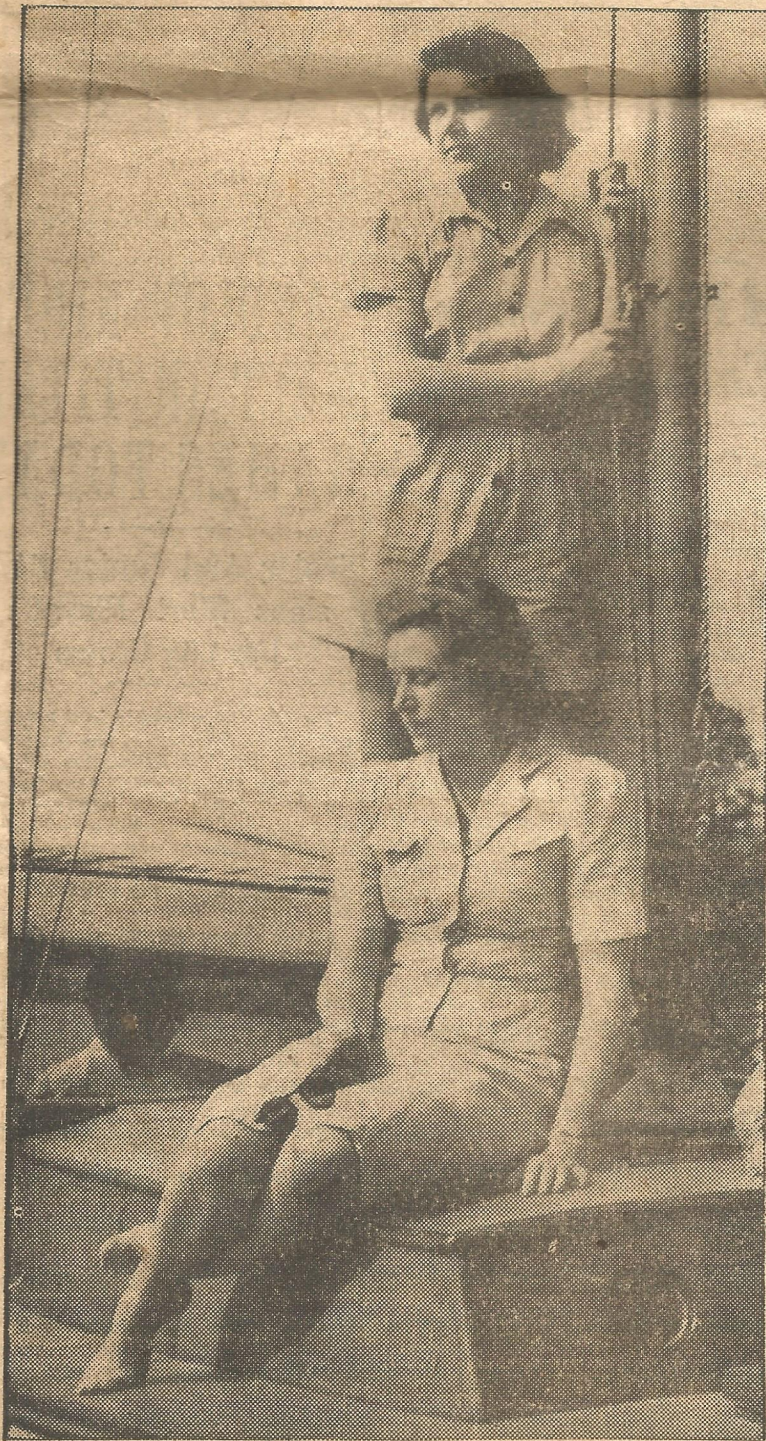


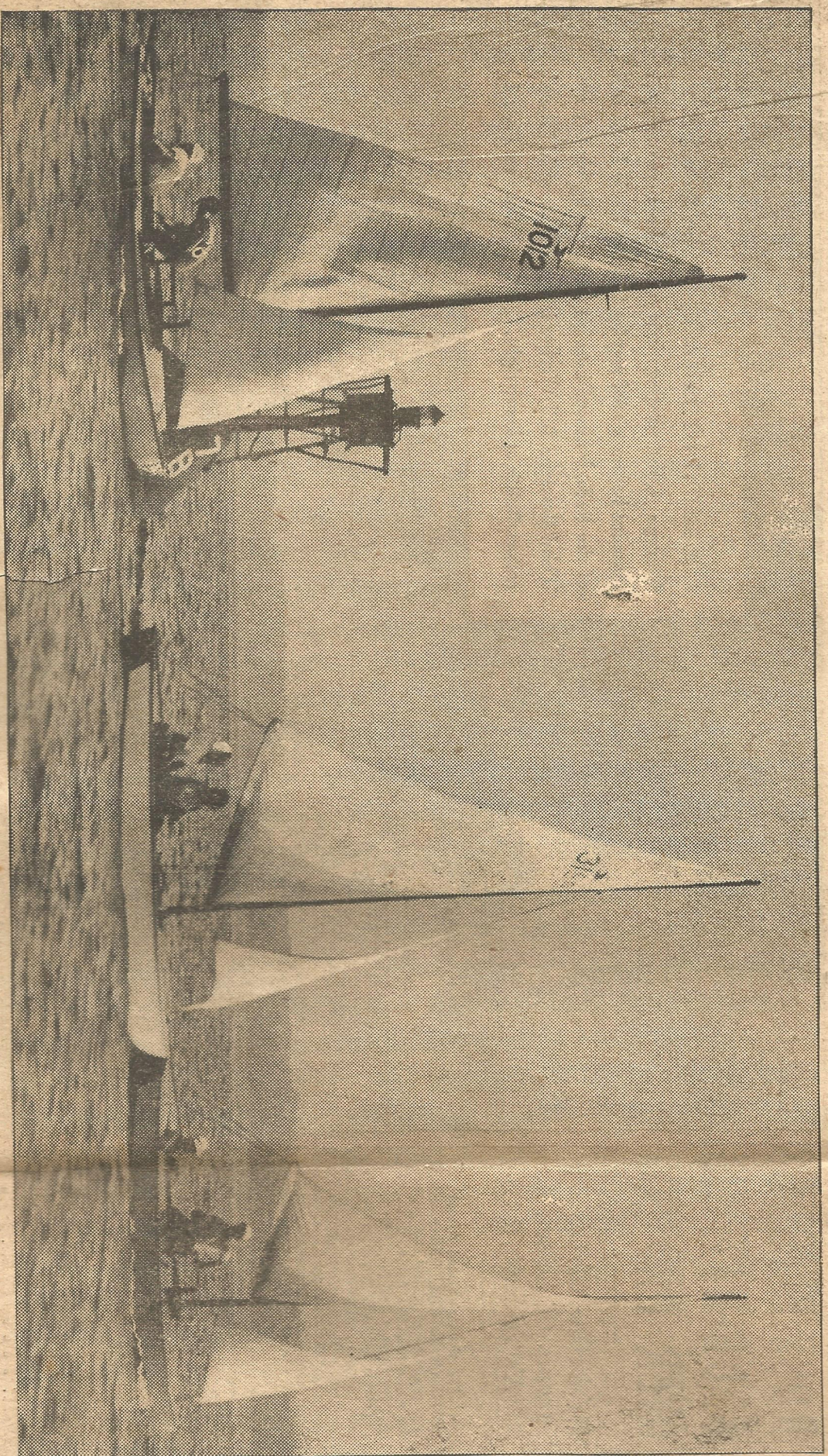
**LINING OUT ON SECOND LEG**—Snipe boats in Potapsk starting second leg of race. Wik-Wiki, owned by W. C. Club, was the winner of the race, which was cor



**WATCHING RACES**—Miss Kitty Wirt-Walker (sitting) and Mrs. Marshall Duer, Jr., watched the first Potapskut regatta from deck of Marcarle off Rock creek yesterday.

# Wiki-Wiki Wins Snipe Feature In Potapskut

THE SUN, BALTIMORE, SUNDAY MORNING, SEPTEMBER



PLINING OUT ON SECOND LEG—Snipe boats in Potapskut Sailing Association regatta starting second leg of race. Wiki-Wiki, owned by W. G. McNeill, Sparrows Point Yacht Club, was the winner of the race, which was contested by seven boats.

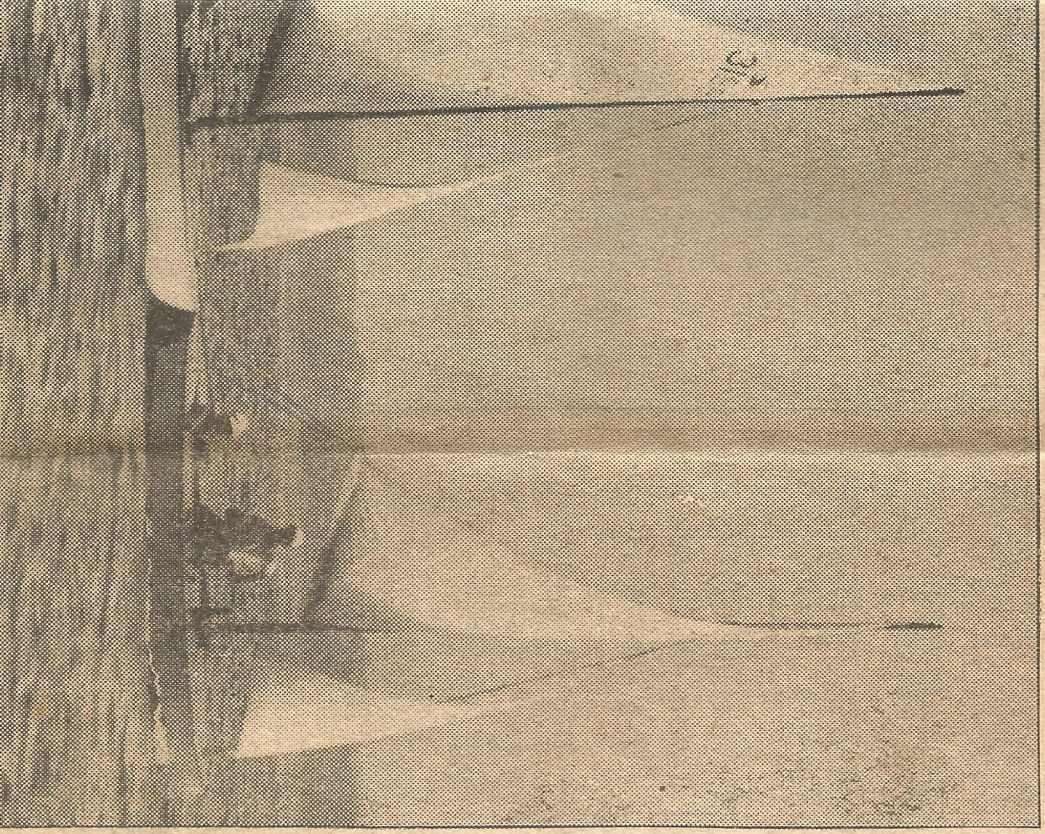
M'N  
LEA  
AT

Wolfe  
Vic

Thirty-  
classes of  
of the P  
yesterday  
Creek.  
The last  
divisions  
the Sparr  
nated the  
race as t  
under a  
the triam  
Wiki-W  
Niell, too  
balance  
by Roger  
Ed Beav  
lead. It  
the first  
stretch  
picked u  
was nece

The bo  
bow and  
was 55 n  
White  
J. Wolfe  
the star  
and 15 s  
The r

# Feature In Potapskut Regatta On Rock Creek



## M'NEIL CRAFT LEADS FLEET AT WALL COVE

### Wolfe's White Wake Is Victorious In Star Class Event

Thirty-five boats of the smaller classes opened the first annual regatta of the Potapskut Sailing Association yesterday at Wall Cove on Rock Creek.

The largest single field in the eight divisions was the snipe class, in which the Sparrows Point Yacht Club dominated the field. It was an interesting race as the seven snipe boats, sailing under a snappy breeze, went around the triangular course.

Wiki-Wiki, skippered by W. C. McNeill, took an early lead, and for the balance of the race Rainbow, sailed by Roger Gintling, and Jim Too, by Ed Beavin, fought to overcome the lead. It was straightaway sailing on the first two legs, but on the home stretch the blue-hulled Rainbow picked up ground in the tacking that was necessary to reach the home mark.

Time: 55m., 20s.

The boats finished Wiki-Wiki Rainbow and Jim Too. The winner's time was 55 minutes and 20 seconds.

White Wake, owned and sailed by J. Wolfe, of Gibson Island, captured the star class race in 1 hour 8 minutes and 15 seconds.

both morning and afternoon races for the small classes, while the racing and cruising classes start on a 17-mile race late in the morning. Entered in the cruising race are Blue Lagoon, Thinculo, Lorelei, Shark, Red Wing, Cats Paw and other crack cruising yachts of the bay.

#### Today's Feature

The Potapskut Association, made up of owners of sailing craft ranging from motus up to cruising classes, are staging their first regatta open to boats owned by members of recognized yacht clubs. The main event of today's racing will be the racing class competing for the Stevenson Memorial Trophy, donated by the wife of the late F. M. Stevenson, Sr.

The racing committee is headed by Edward L. Brewster and the entertainment is being handled by a committee, of which W. Eareckson is the chairman.

#### Results:

- Star Class—White Wake, J. Wolfe, Gibson Island.
- Twenty-foot Round Bottom—Won by George Caffee, Potapskut, S. A.
- Twenty-foot China Bottom—Won by Stormy John Cramer, Annapolis, Y. C.
- National One Design—Won by Vin. Richard Baret, Class—Won by Scandal, R. Ernest Covert, Washington, Y. C.
- Snipe Class—Won by Wiki-Wiki, W. C. McNeill, Sparrows Point, Y. C.
- Class D Dinghies—Won by Sizzle, Frederick Hill, Cornhaman, Y. C.
- Yonkers—Won by Too I, John Badenhoose, Indian Landing, Y. C.

ND LEG—Snipe boats in Potapskut Sailing Association regatta race. Wiki-Wiki, owned by W. C. McNeill, Sparrows Point Yacht Club, captured the race, which was contested by seven boats.

The races continue tomorrow with

# ROCK CREEK GROUP TO HOLD REGATTA

First Event Planned At  
Mouth Of Patapsco Satur-  
day And Sunday

Class D Cruising Boats To  
Race For First Time—Con-  
tests Confined To Sails

Newest addition to the bay's yacht-  
ing fraternity, the Potapskut Sailing  
Association, of Wall Cove, Rock Creek,  
will hold its first annual regatta Sat-  
urday and Sunday in the waters at  
the mouth of the Patapsco.

The Potapskut sailors are windjam-  
mer skippers, and not a single motor-  
boat event is scheduled. An innova-  
tion that very probably will be copied  
by other yachting aggregations next  
season will be a race for class D  
cruising boats, the small overnight

yachts that are overlooked in the  
regattas of the big bay clubs.

### To Be First Race

There are a number of these owned  
by Potapskut squadron members, and  
there are a number of others in upper  
bay waters which never before have  
sailed in a race of their own, so a  
good turnout is expected off the  
White Rocks at 11.55 A. M. Sunday  
for an eleven-mile jog around Seven-  
Foot Knoll.

There will be a class for large  
racing and cruising boats also, going  
off at 11.45 A. M. A star class race  
will start off the day, at 10 A. M., and  
at ten-minute intervals thereafter  
other popular classes will get the  
starting gun.

### Types Of Craft Included

Included will be Hampton one-  
designs, national ones, comets, snipes,  
moths, class D dinghies and 20-foot  
knockabouts.

T. Marshall Ruer, Jr., is commodore

of the club. Edward L. Brewster is  
chairman of the race committee, and  
Martin S. Alvey is chairman of the  
cruising committee.



SEPTEMBER 9-10

1 9 3 9

**ANNUAL  
REGATTA**



**POTAPSKUT  
SAILING  
ASSOCIATION**

WALL COVE · ROCK CREEK

JESSE  
HARRISON  
· MASON ·  
1939

COMPLIMENTS

OF

**ROGERS TOWNSEND BOAT CO.**

WALL COVE

USE

**"MODERN"**

OFFICE FURNITURE

OFFICE SUPPLIES

PRINTED FORMS

**MODERN STATIONERY AND  
PRINTING CO.**

17 S. CHARLES STREET

Baltimore

**ANTON HORVAT**

Maker of

FINE JEWELRY

338 N. CHARLES ST.

**BALTIMORE, MARYLAND**

**Jewelry Repairing**

**Watch Repairing**

**Our Name - Potapskut**

A white explorer's Indian guide from the Eastern Shore, Southern Maryland or Virginia was probably responsible for the name Patapsco, which came into popular use about 1640.

Its roots were POTA (to get out), PSK (ledge of rock), UT (at) Pota-psk-ut thus meant "at the jutting ledge of rock", referring originally to those famed land-marks, the white limestone rocks at the common juncture of the River and our Rock Creek with the Bay; by extension these identified the entire River.

Thus our Association identifies itself simultaneously with the nearby River and the equally close White Rocks.

**American Electric**

**WELDING OF**

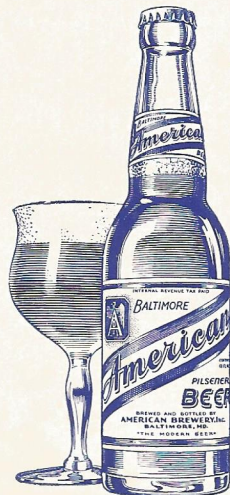
**Welded**

**BALTIMORE,**

AMERICAN Beer is a safe harbor for hot and weary people . . . If you are thirsty, refresh yourself with a cold glass of AMERICAN . . . It is great!

**AMERICAN BREWERY, Inc.**

**Baltimore - Maryland**



Everybody should be happy. Quit complaining of the heat and of being tired. Quench your thirst and invigorate your body with a bottle of cold AMERICAN Beer.

**AMERICAN BREWERY, Inc.**

**Baltimore - Maryland**

Hyde Propellers

Reverse Gears

# MAHON & GALL, Inc.

## MARINE ENGINES

Kermath

Universal

Gray

### SERVICE

Universal Joints

Engine Accessories

**104 E. PRATT STREET**

Baltimore, Md.

Phone, Plaza 3777

Compliments of

## LEO FLANNIGAN

Baltimore, Md.

## Welding Company

### ALL KINDS

### Steel Hulls

### MARYLAND

## EVENTS

### Saturday

- 2:30 P. M. Star Class  
Course C
- 2:40 P. M. 20' Round Bottom  
Class  
Course C
- 2:50 P. M. 20' Cline Bottom  
Class  
Course C
- 3:00 P. M. Hampton One  
Design Class  
Course B
- 3:10 P. M. National One  
Design Class  
Course B
- 3:20 P. M. Comet Class  
Course B
- 3:30 P. M. Snipe Class  
Course B
- 3:40 P. M. Class D Dinghies  
Course A
- 3:50 P. M. Moth Class  
Course A

## SAILMAKERS

### Unexcelled Canvas

### Work of all kinds

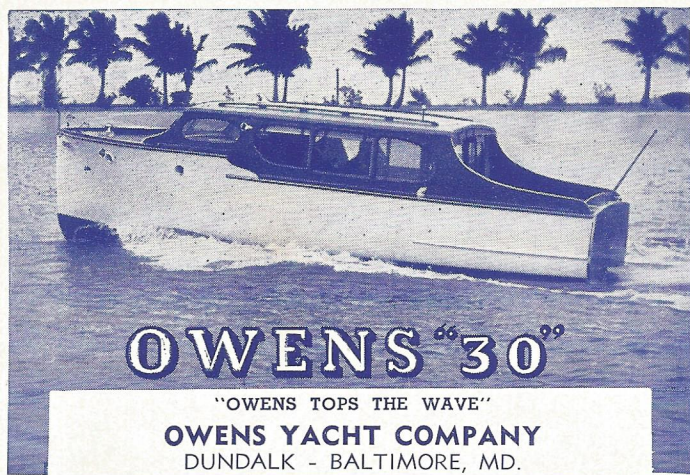
## A. L. ROBERTSON

116 S. FREDERICK STREET



# At your Service

YOUR  DEALER



## DUNLOGGIN FARM DAIRY

3931 - 3949 FALLS ROAD

Baltimore, Md.

Telephone, University 3066

**Quality, freshness and flavor unsurpassed**

Compliments  
of  
**UNGER & MAHON**  
  
YACHT BUILDING  
AND REPAIRS

Dundalk 30

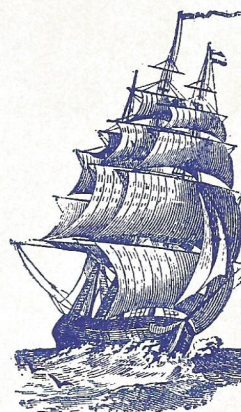
### EVENTS Sunday

- 10:00 A. M. Star Class  
Course C
- 10:10 A. M. 20' Round Bottom  
Class  
Course C
- 10:20 A. M. 20' Cline Bottom  
Class  
Course C
- 10:30 A. M. Hampton One  
Design Class  
Course B
- 10:40 A. M. National One  
Design Class  
Course B
- 10:50 A. M. Comet Class  
Course B
- 11:00 A. M. Snipe Class  
Course B
- 11:10 A. M. Class D Dinghies  
Course A
- 11:20 A. M. Moth Class  
Course A
- 11:45 A. M. Racing and  
Cruising Classes  
Course E
- 11:55 A. M. Cruising D Class  
Course D

## THE MACLEA LUMBER CO.

Baltimore, Md.

**Carrying a complete line of  
woods for the boat builder,  
including**



White Oak  
Mahogany  
White Cedar  
Marine Plwood  
Spruce

COMPLIMENTS OF

# OXFORD SHIP YARDS, Inc.

OXFORD, MD.



**PUBLICITY ENGRAVERS  
INC.**

PHOTO ENGRAVERS

9 E. LEXINGTON STREET

Baltimore

Mathews Cruisers  
Richardson Cruisabouts  
Gar Wood Speed Boats  
Federal Mogul Propellers  
Lycoming Marine Engines

**THE MORTON & LOOSE CO.**

10 W. EAGER STREET  
Baltimore

FOR BEST RESULTS

use

**REGATTA COPPER  
BRONZE**

manufactured by

**Baltimore Copper  
Paint Co.**

Oliver Reeder & Sons, Props.  
Baltimore New York

**EVENTS**

**Sunday**

1:00 P. M. Star Class  
Course C  
1:10 P. M. 20' Round Bottom  
Class  
Course C  
1:20 P. M. 20' Cline Bottom  
Class  
Course C  
1:30 P. M. Hampton One  
Design Class  
Course B  
1:40 P. M. National One  
Design Class  
Course B  
1:50 P. M. Comet Class  
Course B  
2:00 P. M. Snipe Class  
Course B  
2:10 P. M. Class D Dinghies  
Course A  
2:20 P. M. Moth Class  
Course A

The

**JAMES WALKER  
CO.**

**Yacht Fittings**

123-125 LIGHT STREET  
Baltimore

**"Where Courtesy Prevails"**



SPECIFY

**BRANDON DUCK**

There Is No Sail Like A  
— **BRANDON SAIL** —  
To Bear You Lands Away.

when ordering your

**SAILS**

**WINTER COVERS**

**DECK CANVAS**

**TENTS**

**BAGS**

**TARPAULINS**

**SAIL COVERS**

**YARD GOODS**

**"You'd do well to specify BRANDON DUCK whenever you buy."**

# LOG CABIN

CANDY SHOPS

JAMES E. SALE

**KYANIZE**  
MARINE FINISHES

HOWARD and READ STREETS  
Baltimore, Md.

## RULES

C.B.Y.R.A. rules shall govern in all races except where a class is established on a national scale and has its own special rules, in which case the class rules shall supersede all others.

Contestants are requested to keep clear of the Committee Boat when not racing. We hope thus to expedite the work of the Race Committee.

Protests must be filed with the Race Committee within one hour of the finish of the Race in which the dispute occurred.

## GENERAL R

Gasol

Lubricat

Gre

Baltimo

Compliments

of

**MATUSKY'S**

RIVIERA BEACH

## GREETINGS

FROM

**W C A O**

Maryland's Station for the World's Largest Radio Network

*Everything* **Photographic**

**ZEPP PHOTO SUPPLY CO.**

OPEN EVENINGS

3042 GREENMOUNT AVENUE

TO BE THE

**FIRST OVER THE LINE**

Join THE SWING To

**BREWMASTER BEER**

**FINING CO.**

ines

ng Oils

ses

e, Md.

## SUPPLIES

Provisions of all kinds may be had by leaving orders at the Registration tent.

Ice may be had from the ice truck which will be near the dock.

Water may be had at the dock for drinking or for filling tanks.

Gasoline may be had at the dock.

Dairy and Bakery trucks will make deliveries.

Compliments

of

**A FRIEND**

**S**ERVICE  
SAFETY  
SAVINGS

YOUR LIFE

YOUR BOAT

YOUR HOME

**ARE VALUABLE ASSETS**

Protect Them By Using  
**FIRE CHIEF CANVAS and FIRE CHIEF COMPOUNDS**

See Your Dealer

**WM. E. HOOPER & SONS CO.**

Baltimore, Md.

**ATLANTIC MUTUAL  
INSURANCE CO.**

SOUTH and WATER STREETS

**Specialists in Yacht Insurance**

Plaza 4653

Established 1842

**KIDD & BUCKINGHAM  
LUMBER CO.**

BALTIMORE

**Wholesalers and Exporters**

**of Hardwoods**

Compliments

of

**WM. H. WHITING  
CO.**

Marine Supplies of

All Kinds for

the Yachtsman

**TROPHIES**

Trophies will be awarded the winners of the series of races for the smaller boats. There will be three awards in a class of seven or more entries, 2 in a class of 5 entries, and one prize for three entries in all races. Trophies will also be given in any class not listed in which there are five or more entries.

The Stevenson Memorial Trophy is donated by the wife of the late F. M. Stevenson, Sr., who was one of our enthusiastic charter members, and is to be competed for by the Racing Class on Sunday. This is a perpetual trophy to be raced for each year.

The prizes will be awarded in front of the Club House immediately following the finish of the last race on Sunday.

Compliments

of

**JOHN DUER &  
SONS, Inc.**

1839

1939

**COMPLIMENTS**

**OF**

**A F R I E N D**

**JAMES J. LACY CO.**

1401 BLOCK STREET

**CASTINGS**

Of All Descriptions

In All Metals

Compliments

of

**SCHOFIELD**

**SILVER CO.**

Baltimore

Compliments

of

**ANCHOR INN**

**ENTRIES**

Entry blanks may be secured from the member of the Race Committee who will be at the landing pier all day Saturday, if you have not already received one.

Races are open to boats owned by members of recognized yacht clubs or on bona fide charter to members thereof.

**FOR CHARTER**

A 30' Owens Cruiser

**By Week or Month**

SPECIAL RATES ON

FLORIDA CRUISES

THIS WINTER

**JOHN L. GAINOR**

Ver. 3400 939 ST. PAUL ST.

COMPLIMENTS OF

**MONUMENTAL LIFE INSURANCE CO.**

**BALTIMORE, MD.**

Commodore . . . . .	T. MARSHALL DUER, Jr.
Vice-Commodore . . . . .	J. THOMAS NELSON
Secretary . . . . .	S. VANNORT CHAPMAN
Treasurer . . . . .	W. HALL HARRIS, III
Chairman Race Committee . . . . .	EDWARD L. BREWSTER
Chairman Cruising Committee . . . . .	MARTIN S. ALVEY
Chairman Entertainment and Reception Committee . . . . .	W. W. EARECKSON
C.B.Y.R.A. Representative . . . . .	O. L. TIEDEMAN

## MEMBERSHIP

ACKERMAN, CARL	"Red Wing"
ADAMS, C. T.	"Stardust"
ALVEY, MARTIN S.	"Mary"
BAGG, J. HERBERT	
BREED, RICHARD E.	
BREWSTER, EDW. L.	"Lusty Loon"
CAFFEE, GEO. E.	"B.-J."
CHAPMAN, S. VANNORT	"Valoha"
CLARK, ERNEST J.	"Rascal"
CORCKORAN, JOHN C.	
DORTON, FRED B.	
DUER, T. MARSHALL, Jr.	"Marcarle"
EARECKSON, WM. W.	"Cat's Paw"
GILLIS, A. COLIN, Jr.	
GORMAN, CLIFFORD	"Snark"
HARRIS, W. HALL, III	"Valoha"
HOLMES, STEWART B.	"Ursa"
HOWARD, BENJ. C.	"Bensark"
HUEBSCHMAN, GEO. J.	"Lorelei"
HUGHES, J. R.	"Lorelei"
ILIFF, CHARLES	
JENSEN, WM.	"Snark"

## ENTERTAINMENT

The Potapskut Sailing Association welcomes all visiting yachtsman and hopes that everyone has a pleasant time while with us.

There will be a dinner at seven o'clock at Fairview Park which we hope will be attended by all yachtsman and their guests. The dinner will be served at seventy-five cents per person. After dinner there will be a party. Informal sailing attire is in order. Other meals can be arranged on request.

## RACE COMMITTEE

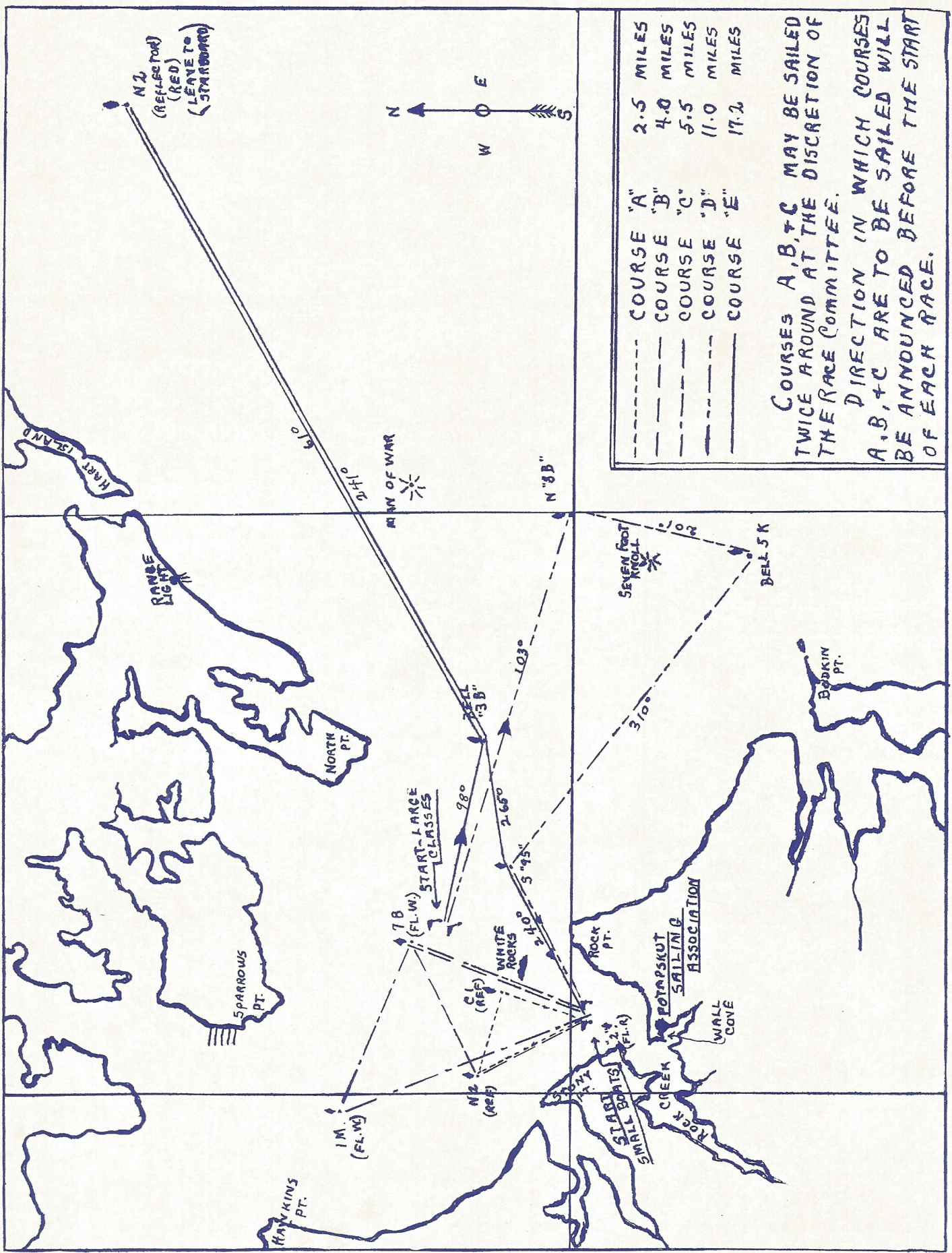
Edw. L. Brewster, Ch.  
 O. L. Tiedeman  
 H. W. Keating  
 J. Walker  
 J. B. Rogers  
 L. Knight  
 R. H. Walker  
 B. Howard

## ENTERTAINMENT and RECEPTION COMMITTEE

W. Eareckson, Ch.  
 A. C. Gillis, Jr.  
 W. L. Nield  
 J. W. Marchant  
 Wm. White  
 Wm. Jensen

## MEMBERSHIP

KEATING, HENRY W.	
KNIGHT, LAWRENCE	"Tillie the Toiler"
MARCHANT, JOHN W., Jr.	"Lagoon"
MASON, JESSE H.	
NELSON, J. THOMAS	"Alsumar"
NIELD, HARRY K.	"Vingt Trois"
NIELD, WAYNE L.	"Vingt Trois"
ROACH, PHILIP	"R-T"
ROGERS, JOHN B.	
SHEPPHARD, H. M.	
STEVENSON, F. M., Jr.	"Lorelei"
TAYLOR, FRANCIS	"R-T"
TIEDEMAN, OTTO L.	"Mary"
TOMPSON, WILLIAM	
UHLER, EARL D.	
VonKAESBORG, NIKOLAI	"Trinculo"
WALKER, JOHN C.	"Mickie"
WALKER, TALBOT H.	"Tillie the Toiler"
WALKER, ROBT. H.	"Tillie the Toiler"
WALLACE, CHAS.	"Blue Lagoon"
WHITE, WILLIAM	"Bob White"
WILSON, GEORGE	"Wanderlust"



---	COURSE "A"	2.5 MILES
---	COURSE "B"	4.0 MILES
---	COURSE "C"	5.5 MILES
---	COURSE "D"	11.0 MILES
---	COURSE "E"	17.2 MILES

COURSES A, B, & C MAY BE SAILED TWICE AROUND AT THE DISCRETION OF THE RACE COMMITTEE.  
 DIRECTION IN WHICH COURSES A, B, & C ARE TO BE SAILED WILL BE ANNOUNCED BEFORE THE START OF EACH RACE.

O. L. TIEDEMAN

GEO. CAFFEE

# MILLER (Smooth Sailing)

TIRES and TUBES

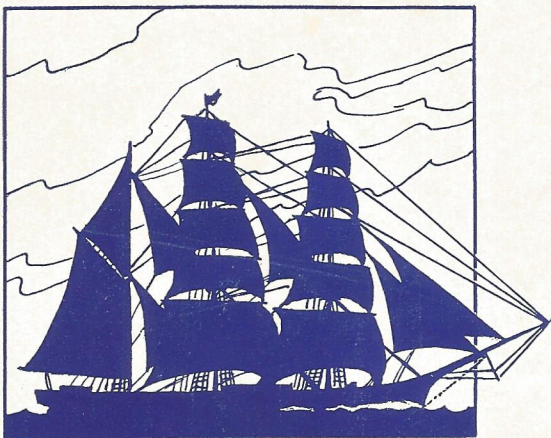
BATTERIES

PORTABLE RADIOS

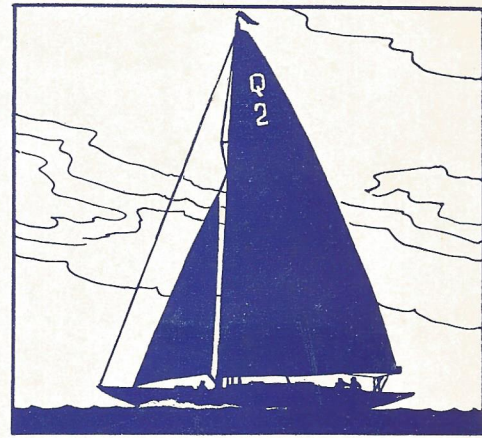
## CAFFEE TIRE CORPORATION

939 ST. PAUL STREET

Vernon 3400



STEVENSON  
SAILS  
FOR  
SUCCESS  
"Steve Made"



BOAT COVERS

SAIL COVERS

# F. M. STEVENSON CO., INC.

412 E. PRATT STREET

BALTIMORE, MD.

Tarpaulins - Winter Covers - Awnings - Tents

Distributors of  
FIRE CHIEF CANVAS  
AND  
COMPOUNDS

PLAZA 5667

WE USE THE BEST

BRANDON  
•  
HOOPER  
AND  
MT. VERNON DUCKS